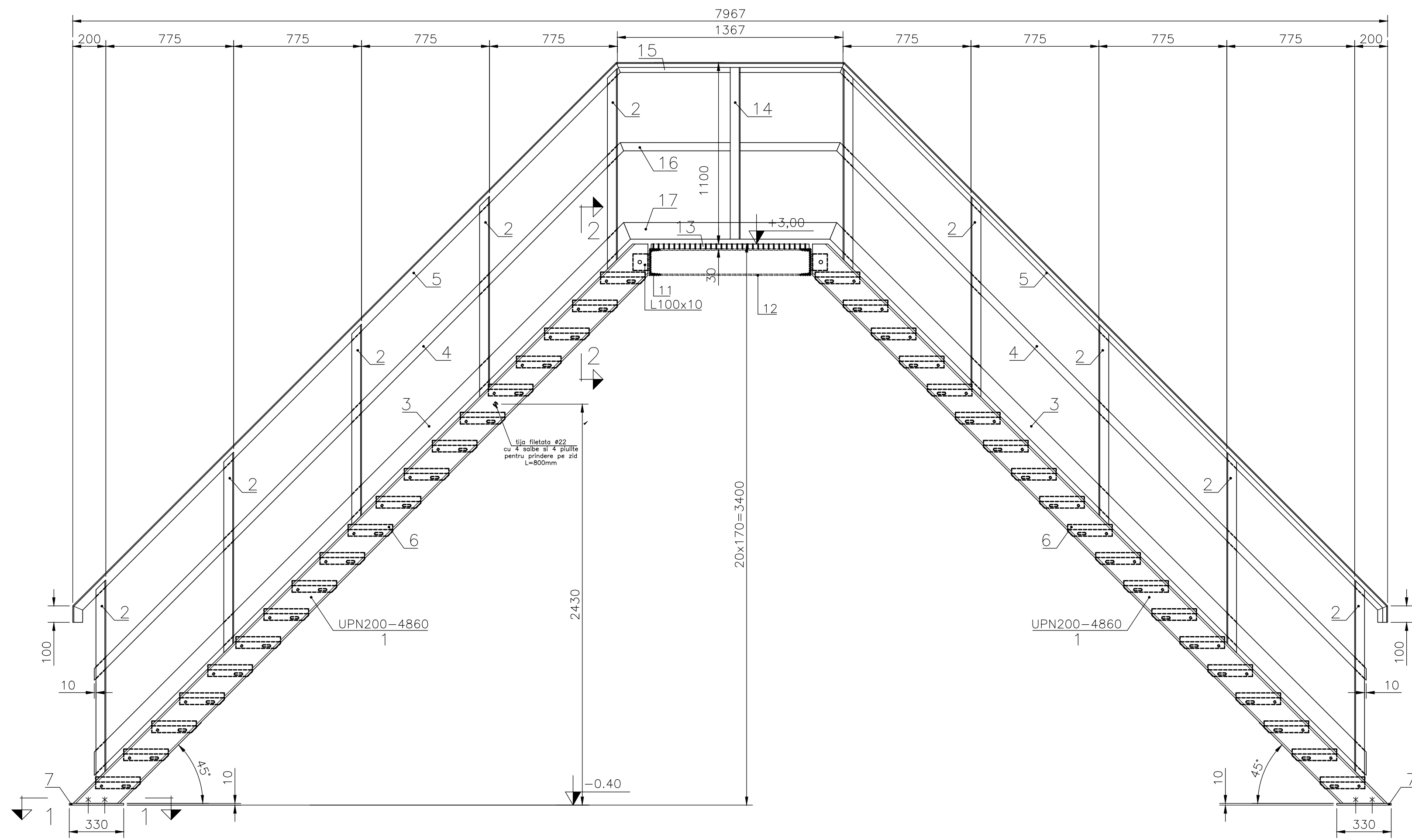
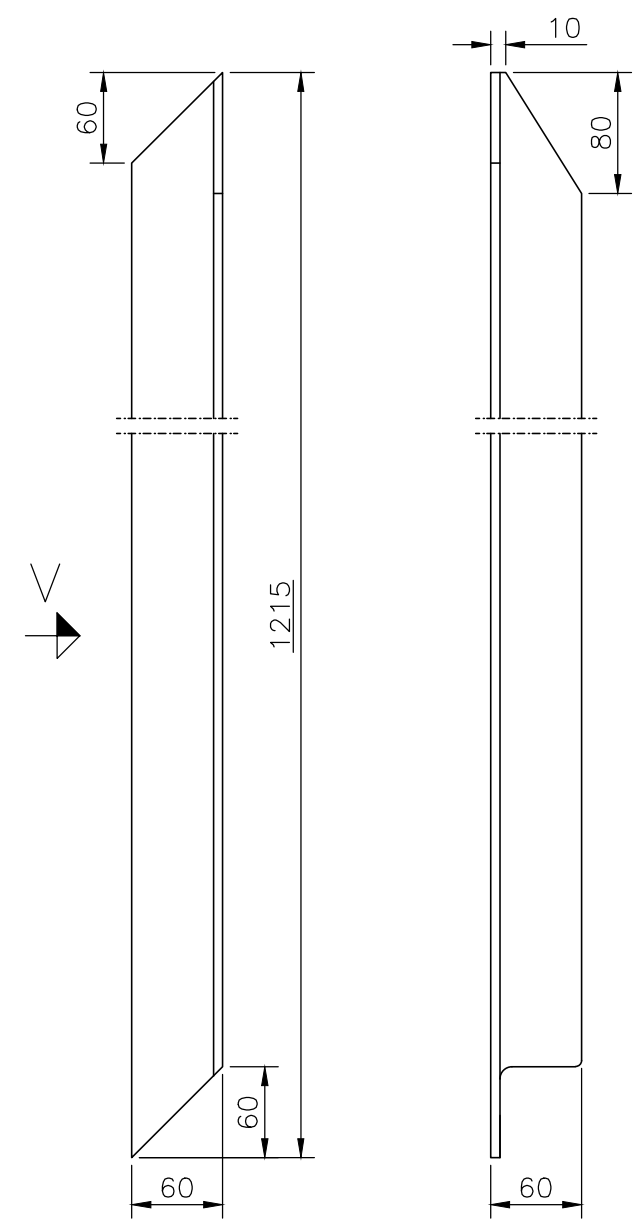


SCARA ACCES IN CUVA

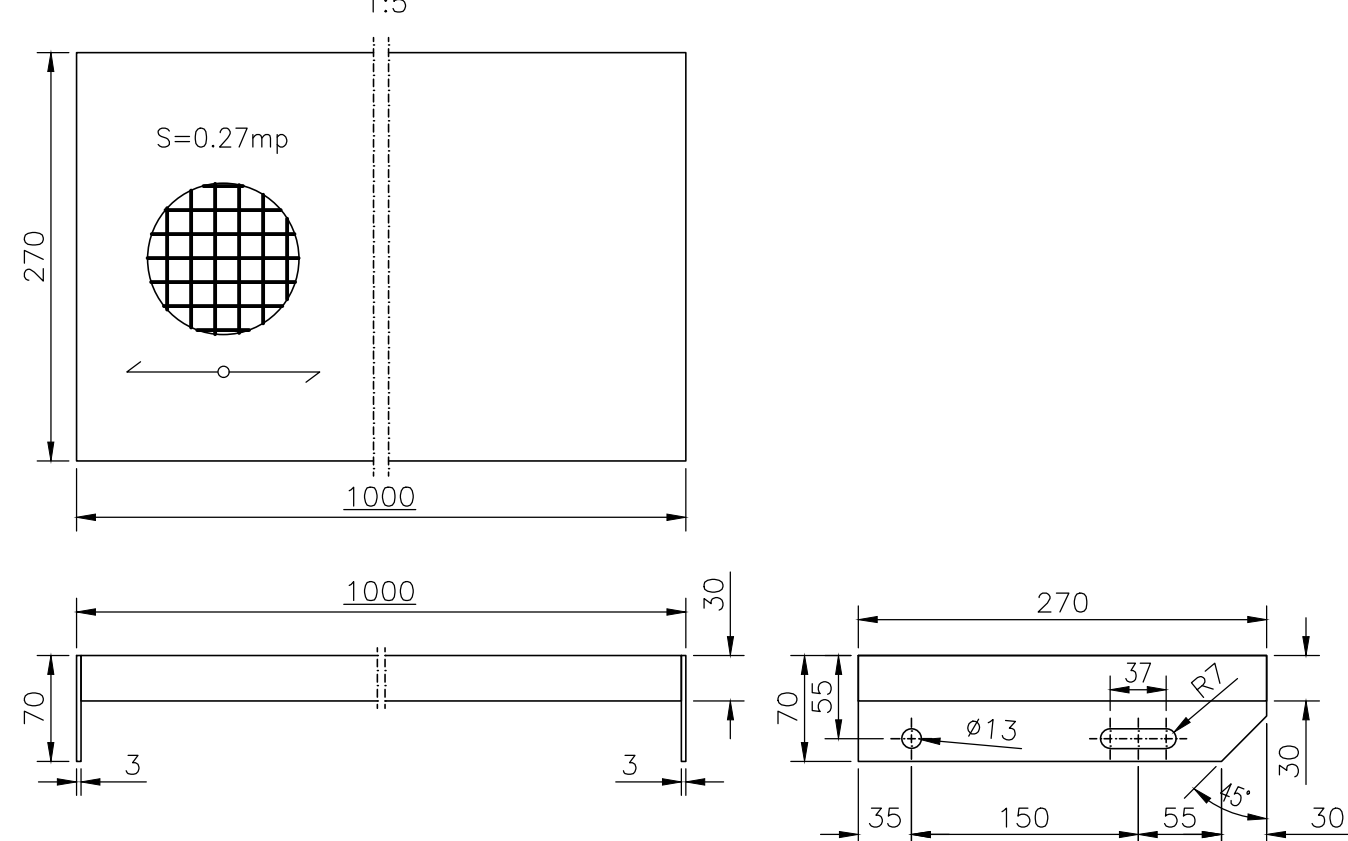
1:20



2-L60x6-1215  
(5 buc. cf. desen, 5 buc. in oglinda)  
1:5



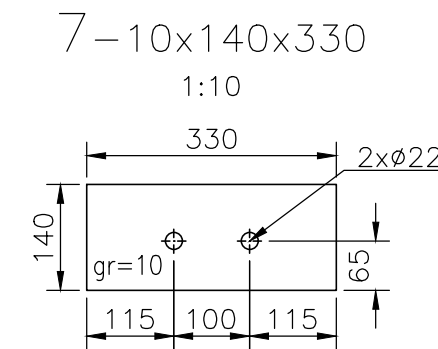
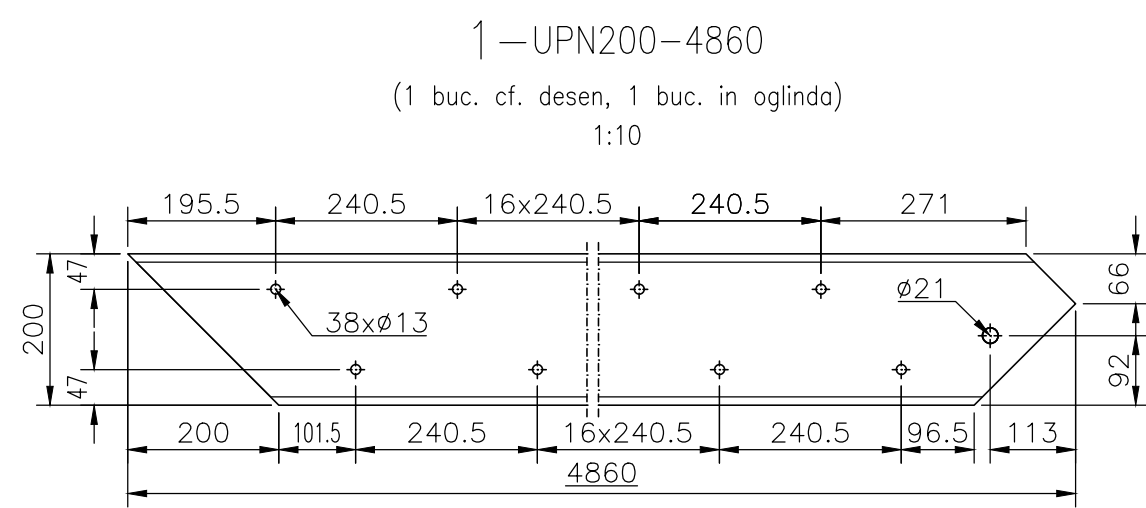
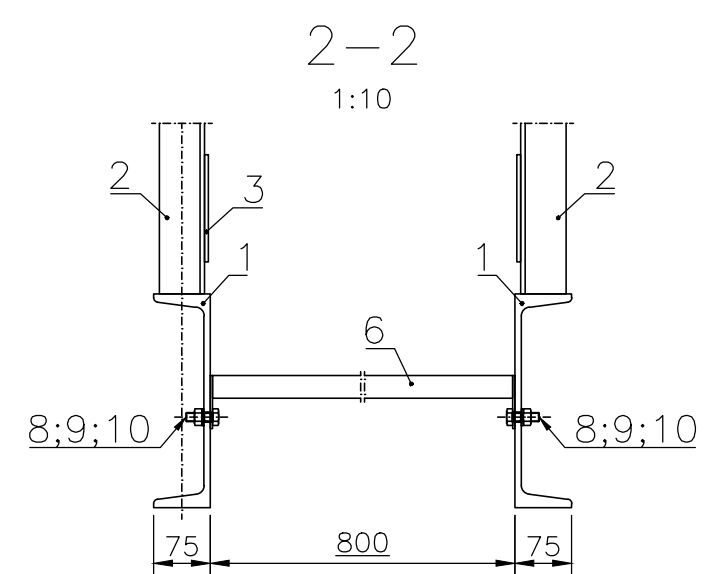
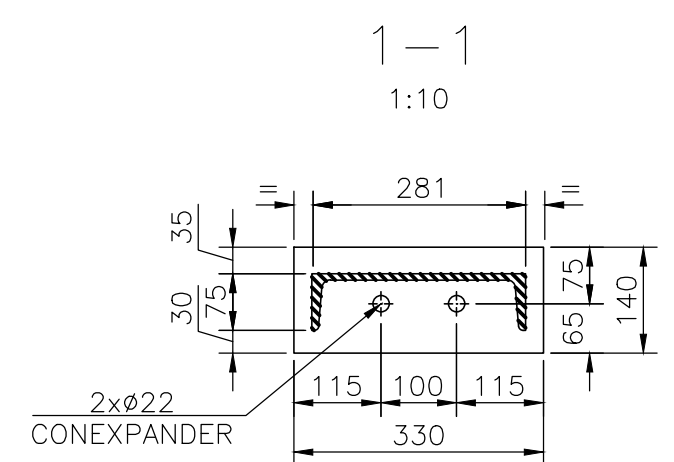
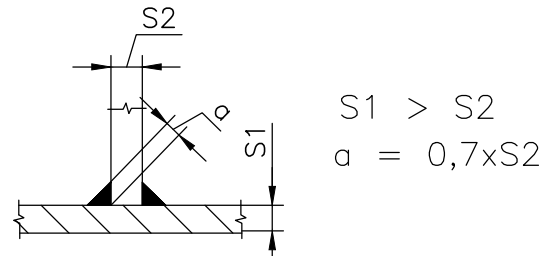
6-800x270x30  
1:5




EXTRAS DE MATERIALE PENTRU 1 BUCATA SCARA  
SE VOR EXECUTA 2 BUCATI

17	APARATOARE PICIOR	SR EN 10025-2:2004	2	S235 J2	5x100-4800	18.84
16	APARATOARE MEDIANA	SR EN 10025-2:2004	2	S235 J2	5x50-1330	2.2
15	MANA CURENTA	SR EN 10056-1:2000	2	S235 J2	L60x6-1367	26.95
14	MONTANT VERTICAL	SR EN 10056-1:2000	2	S235 J2	L60x6-1040	6.10
13	GRATAR PODET	CATALOG FURNIZOR	1	S235 J2 Zn	S=0.95mp	5.10
12	ELEMENT RAMA	SR EN 10279:2002	2	S235 J2	UPN160-870	18.5
11	ELEMENT RAMA	SR EN 10279:2002	2	S235 J2	UPN160-977	19.3
10	SAIBA R12	SR EN ISO 887:2003	152	OLC 55A	CADMIAT	0.0063
9	PIULITA M12	SR EN ISO 4032:2013	152	GR. 6	CADMIAT	0.0173
8	SURUB M12x35	SR EN ISO 4018:2011	152	GR. 6.8	CADMIAT	0.0448
7	PLACA DE BAZA	SR EN 10025-2:2004	4	S235 J2	10x140-330	3.63
6	GRATAR TREAPTA	CATALOG FURNIZOR	38	S235 J2 Zn	S=0.27mp	8.10
5	MANA CURENTA	SR EN 10056-1:2000	4	S235 J2	L60x6-4970	26.95
4	APARATOARE MEDIANA	SR EN 10025-2:2004	4	S235 J2	5x50-4750	9.32
3	APARATOARE PICIOR	SR EN 10025-2:2004	4	S235 J2	5x100-4800	18.84
2	MONTANT VERTICAL	SR EN 10056-1:2000	22	S235 J2	L60x6-1215	6.60
1	VANG	SR EN 10279:2002	4	S235 J2	UPN200-4860	122.96
	ELECTROZI	SR EN ISO 2560:2010				29.5

NOTA:  
- Cu exceptia sudurilor specificate pe desen,  
toate piesele se imbina pe linia de contact intre  
ele prin cordoane de sudura continua de colt cu  
grosimea a=0.7 din grosimea minima a pieselor  
care se imbina, in uzina, conform detaliului.



Poz.	DENUMIRE		Standard		Buc.	Material	Observatii	Greutate kg./buc.	
3				6					
2				5					
1				4					
Rev.	Descriere		Data	Semnat	Rev.	Descriere		Data	Semnat
Acest document este proprietatea S.C. ELLIS'92 S.R.L. si nu va fi comunicat fara autorizare									
Intocmit	Verificat	Aprobat	Beneficiar			Denumire proiect			
S.B.	N.R.	A.I.	CONPET SA			CONSTRUCTIE DEZERVOR NOU PENTRU TITEL (V=2500 mc) STATA DE POMPARE BLED TIMS			
92 ELLIS			SCARA ACCES IN CUVA				Nr.: A656U-13	Rev.0	
							Scara: 1:100		
							Index: A656U-BD	Rev.0	
			Material:		Masa:1450kg		Data: 04.2019	Plansa:1/1	